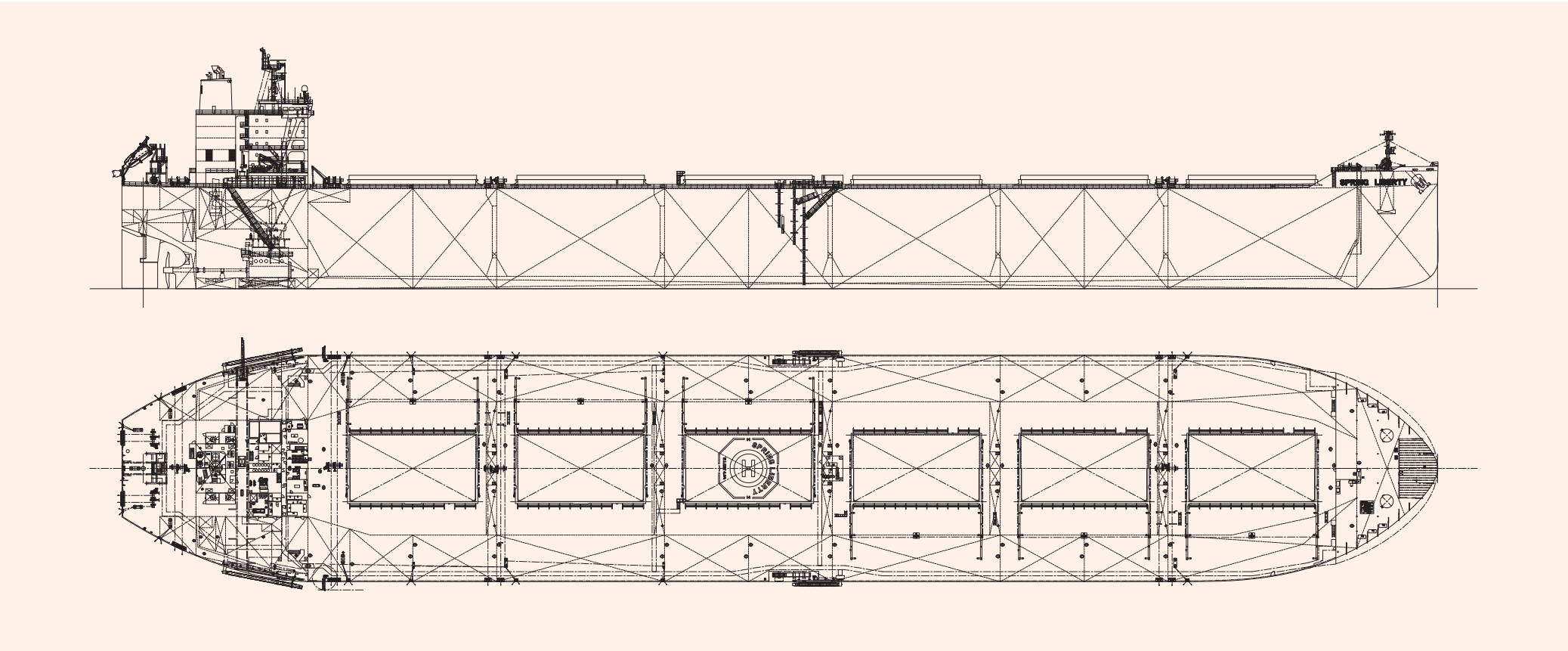


SPRING LIBERTY 243,338 DWT Ore Carrier 80

☐ Contents ☐ By Builder ☐ By Ship Type



SPRING LIBERTY 243,338 DWT Ore Carrier 80



PRINCIPAL PARTICULARS

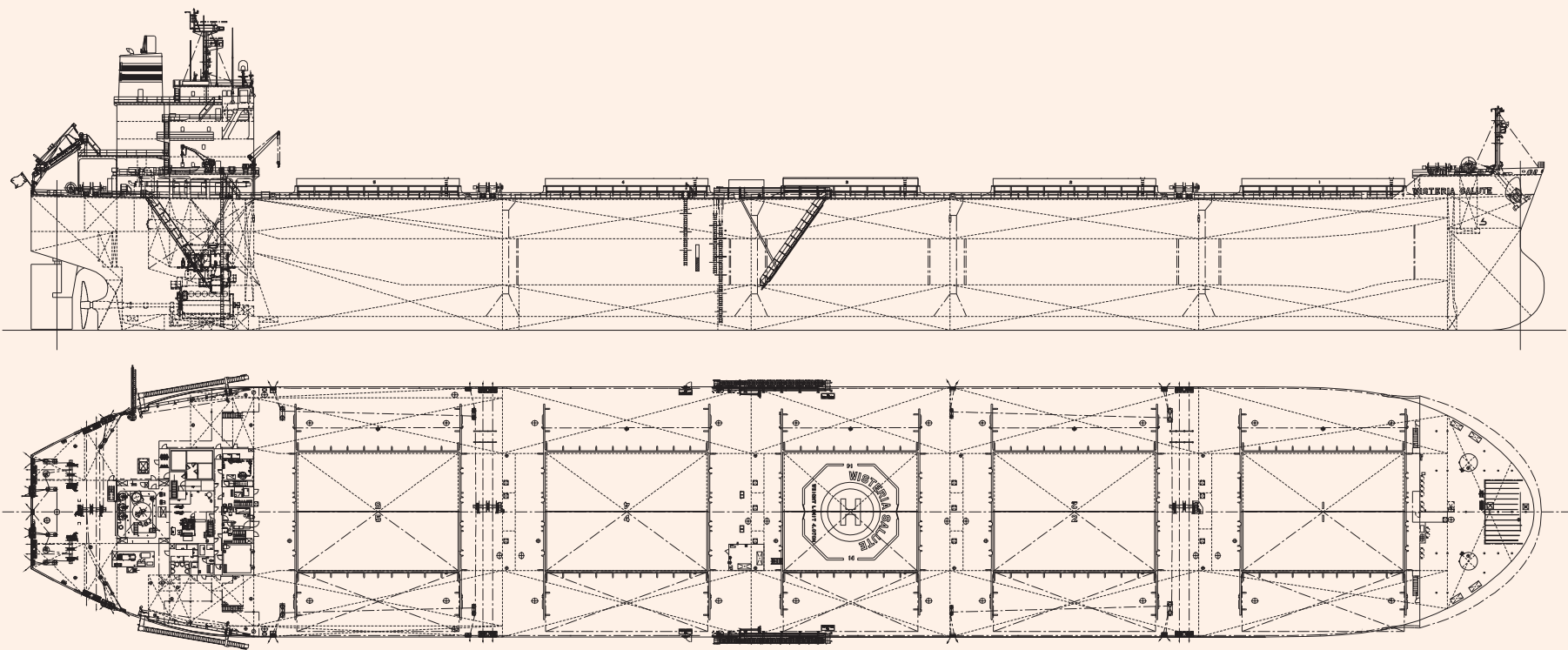
Length (o.a.)	319.95 m	Main engine	MITSUI-MAN B&W 6G70ME-C9.5
Breadth (mld.)	55.00m	MCR (kwxmin ⁻¹)	16,960 kW × 76.0 min ⁻¹
Depth (mld.)	24.30 m	Speed (service)	abt. 14.5 knots
Draft (ext.)	18.220 m (Summer draft)	Complement	28 Persons
Gross tonnage	122,981	Classification	NIPPON KAIJI KYOKAI (NK)
Deadweight	243,338 MT	Builder	Imabari Shipbuilding Co., Ltd. / Hiroshima Shipyard

WISTERIA SALUTE 88,730 DWT Bulk Carrier 81

☐ Contents ☐ By Builder ☒ By Ship Type



WISTERIA SALUTE 88,730 DWT Bulk Carrier 81



PRINCIPAL PARTICULARS

Length (o.a.)	229.98 m	Main engine	MITSUI-MAN B&W 6S60ME-C8.5
Breadth (mld.)	38.00 m	MCR (kwxmin ⁻¹)	9,600 kW × 84.0 min ⁻¹
Depth (mld.)	19.90 m	Speed (service)	abt. 14.5 knots
Draft (ext.)	13.904 m (Summer draft)	Complement	25 Persons
Gross tonnage	49,905	Classification	NIPPON KAIJI KYOKAI (NK)
Deadweight	88,730 MT	Builder	Imabari Shipbuilding Co., Ltd. / Marugame HQ

NSU BRAZIL 400,000 DWT Ore Carrier 82

☐ Contents ☐ By Builder ☒ By Ship Type



NSU BRAZIL 400,000 DWT Ore Carrier 82

Japan Marine United Corporation has delivered “NSU BRAZIL”, 400,000 DWT Ore Carrier at Ariake Shipyard on December 2, 2020.

Features

- 1. This is the third vessel of the first 400,000 DWT ore carrier (Valemax) series built in Japan.
- 2. Principal particulars have been optimized for transportation for Brazilian iron ore by using the various technology and the latest design know how developed through JMU’s extensive experiment in building large size bulk carriers.
- 3. High propulsion performance was achieved by the application of lower resistance and high efficiency hull form. In addition, The SSD® (Super Stream Duct®) and SURF-

BULB® (Rudder Fin with Bulb) equipped fore and aft of the propeller, respectively, greatly improve the propulsion performance.

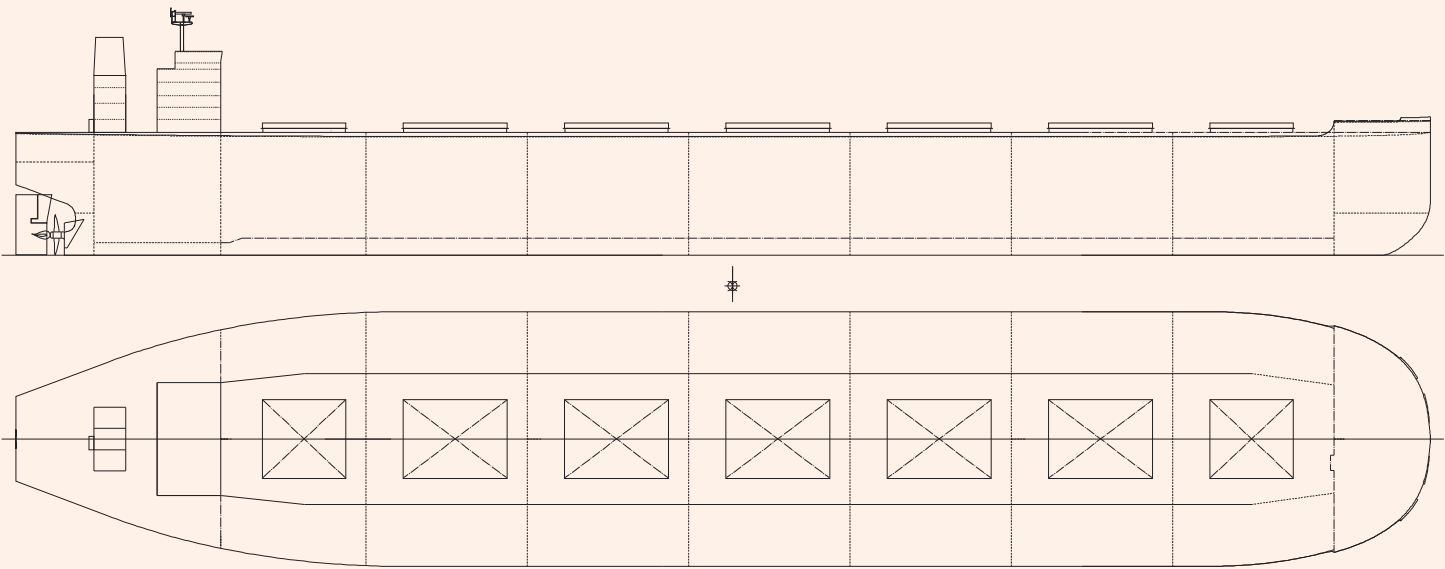
- 4. Furthermore, well-refined shape of the superstructure, which complies with IMO “Code on noise levels on board ships”, can attain low wind resistance.
- 5. The fuel oil consumption was much improved by the

application of new electronically controlled engine, low friction paint and large diameter propeller.

- 6. The vessel is also equipped with a SOx scrubber to comply with MARPOL ANNEX VI Regulation 14. All these features ensure the vessel’s effectiveness in energy-saving and environmental friendly performance.

PRINCIPAL PARTICULARS

Length (o.a.)	361.0 m	Gross tonnage	197,453
Breadth (mld.)	65.0 m	Deadweight	399,821 t
Depth (mld.)	30.2 m	Classification	NK
Draft (mld.)	23.0 m	Builder	Japan Marine United Corporation



AKAGISAN 250,127 DWT Ore Carrier 83

[Contents](#) [By Builder](#) [By Ship Type](#)



PRINCIPAL PARTICULARS

Length (o.a.)	329.95 m	Gross tonnage	136,199	Complement	25
Breadth (mld.)	57.00 m	Deadweight	250,127 t	Classification	Nippon Kaiji Kyokai (NK)
Draft (mld.)	18.00 m	Main engine	MAN B&W 7G70ME-C9.5	Builder	Namura Shipbuilding Co., Ltd.

NSU BRILLIANCE 249,989 DWT Ore Carrier 84

☐ Contents ☐ By Builder ☐ By Ship Type



PRINCIPAL PARTICULARS

Length (o.a.)	329.95 m	Gross tonnage	136,160	Complement	30
Breadth (mld.)	57.00 m	Deadweight	249,989 t	Classification	Nippon Kaiji Kyokai (NK)
Draft (mld.)	18.00 m	Main engine	MAN B&W 7G70ME-C9.5	Builder	Namura Shipbuilding Co., Ltd.

SAKURA ANGEL 99,623 DWT Bulk Carrier

85

☐ Contents ☐ By Builder ☐ By Ship Type



SAKURA ANGEL 99,623 DWT Bulk Carrier 85

Oshima Shipbuilding Co., Ltd. delivered SAKURA ANGEL, a 99,623-DWT bulk carrier, to OCEAN TRANSIT CARRIER S.A. in October 2020.

Features

- 1. This vessel has an optimized hull form for carrying coal, and large deadweight(99,623 MT) with shallow draft (12.841m)
- 2. This vessel has large collecting tank for storage of hold wash water, deck wash water.
- 3. A dedicated stripping line is installed in the double-bottom ballast tank, which is combined with two large

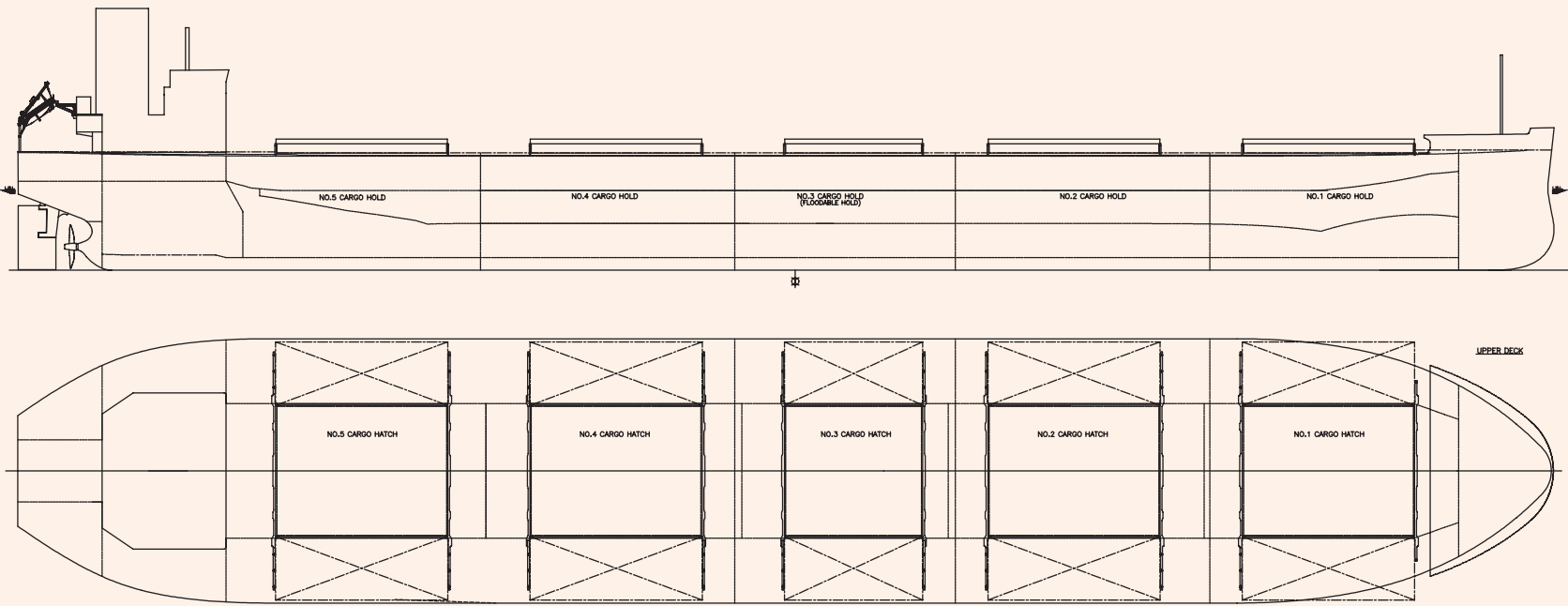
- ballast pumps to shorten the deballast time.
- 4. Advanced Flipper Fins & Rudder Fin which improve propulsion efficiency are installed.

- 5. Special bow form, Seaworthy Bow improves speed performance in rough sea conditions as compared to ordinary bows.

PRINCIPAL PARTICULARS

Length (o.a.)	249.98 m
Breadth (mld.)	43.00 m
Depth (mld.)	18.50 m
Draft (mld.)	12.841 m
Gross tonnage	57239
Deadweight	99,623 MT

Main engine	MITSUI-MAN B&W 6S60ME-C8.5-EGRBP
MCR (kw×rpm)	10,640 kW × 84.0 rpm
Speed (service)	14.30 knots
Complement	27
Classification	NK
Loading capacity (grain)	119,788 m³
Builder	Oshima Shipbuilding Co., Ltd.



MIRAI 15,000 DWT Coal Carrier

86

☐ Contents ☐ By Builder ☒ By Ship Type



MIRAI 15,000 DWT Coal Carrier 86

The 15,000-dwt Coal Carrier MIRAI was built at Shin Kurushima Dockyard Co., Ltd., and delivered to a Japanese Owner in January 2021.

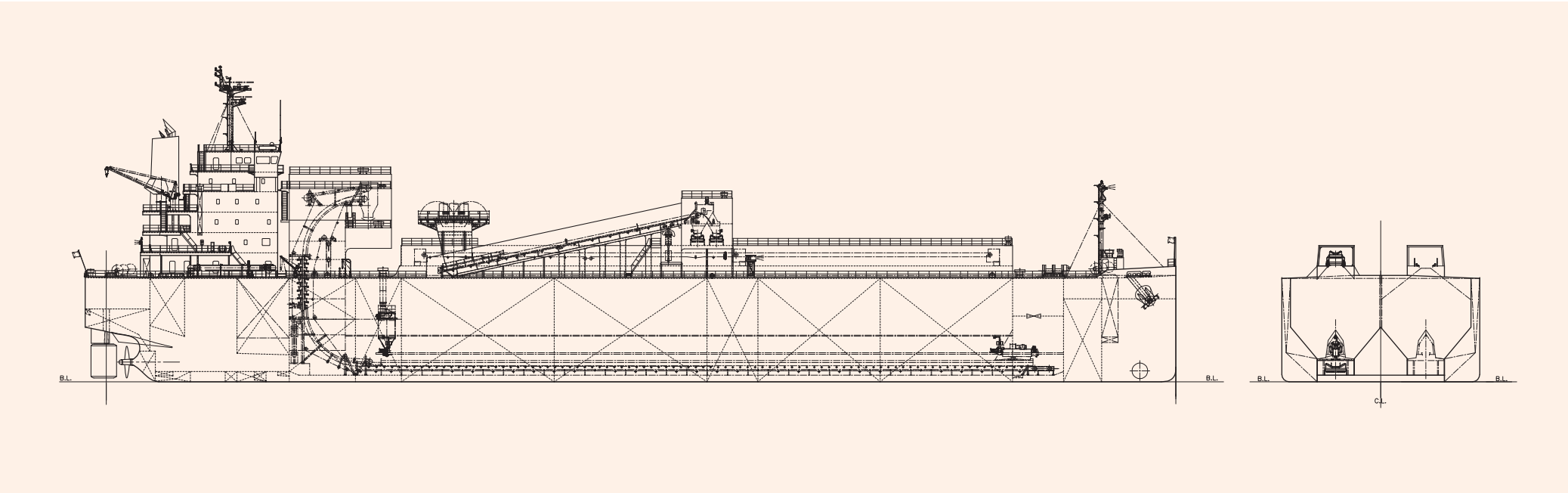
Features

- 1. The Limestone unloading system has a capacity of 2,400 t/h mechanical unloading (2-lines).
- 2. The system consists of hold bottom TC chain conveyors, bucket elevators, etc.
- 3. Her hold is designed and built with special care for cargo residue.
- 4. Side thruster is installed for efficient maneuverability in port.

PRINCIPAL PARTICULARS

Length (o.a.)	149.91 m
Length (b.p.)	147.00 m
Breadth (mld.)	27.20 m
Depth (mld.)	14.20 m
Draft (mld.)	6.48 m
Gross tonnage	18,419
Deadweight	15,000 t

Main engine	AKASAKA 7UEC35LSE-Eco-B2
MCR (kW×rpm)	5,880 kW x 167 min ⁻¹
NOR (kW×rpm)	4,988 kW x about 158 min ⁻¹
Speed (service)	13.0 knots
Complement	13 P
Classification	NK
Loading capacity (grain)	18,027 m ³
Builder	Shin Kurushima Dockyard Co., Ltd.



SHINEI MARU 5,000 DWT Limestone Carrier

87

☐ Contents ☐ By Builder ☒ By Ship Type



SHINEI MARU 5,000 DWT Limestone Carrier 87

The 5,000-dwt type Limestone Carrier SHINEI MARU was built at SHIN KURUSHIMA HASHIHAMA DOCKYARD CO., LTD. and delivered to the Japanese Owner in July 2020.

Features

- 1. The vessel has two independent cargo tanks with insulation.
- 2. Cargo tanks sufficiently strong to carry a full cargo with a specific gravity of 1.3t/m³.
- 3. Bow thruster is equipped for good-in-harbor maneuverability.

PRINCIPAL PARTICULARS

Length (o.a.)	98.51 m	Main engine	HANSHIN LH41LA
Length (b.p.)	95.50 m	MCR (kW×rpm)	2,647 kW x 240 rpm
Breadth (mld.)	16.00m	NOR (kW×rpm)	2,250 kW x about 227 rpm
Depth (mld.)	7.60 m	Speed (service)	13.0 knots
Draft (mld.)	6.262 m	Complement	12 P
Gross tonnage	3,305	Classification	NK
Deadweight	5,016 t	Loading capacity (grain)	4,621 m³
		Builder	Shin Kurushima Hashihama Dockyard Co., Ltd.

